



Britannicus Stone



Alabaster

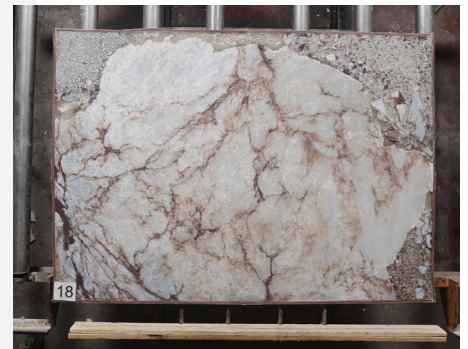
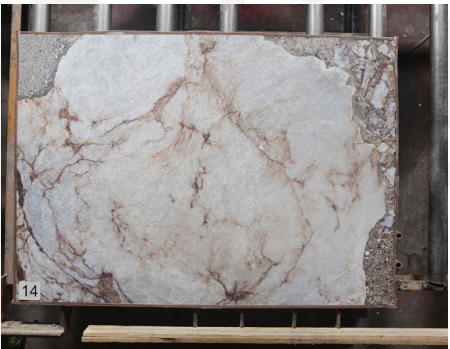
Mined in Staffordshire, this entirely unique Alabaster is a rare form of gypsum which has been used in this country for sculpture and decorative work for at least eight centuries. Exquisite translucent tones of pale bluey grey with light brown veining make this stone a true British gem.



Alabaster

Slab Dimensions:

Typical slab sizes are 1.5m x 1 m;
however they can vary.



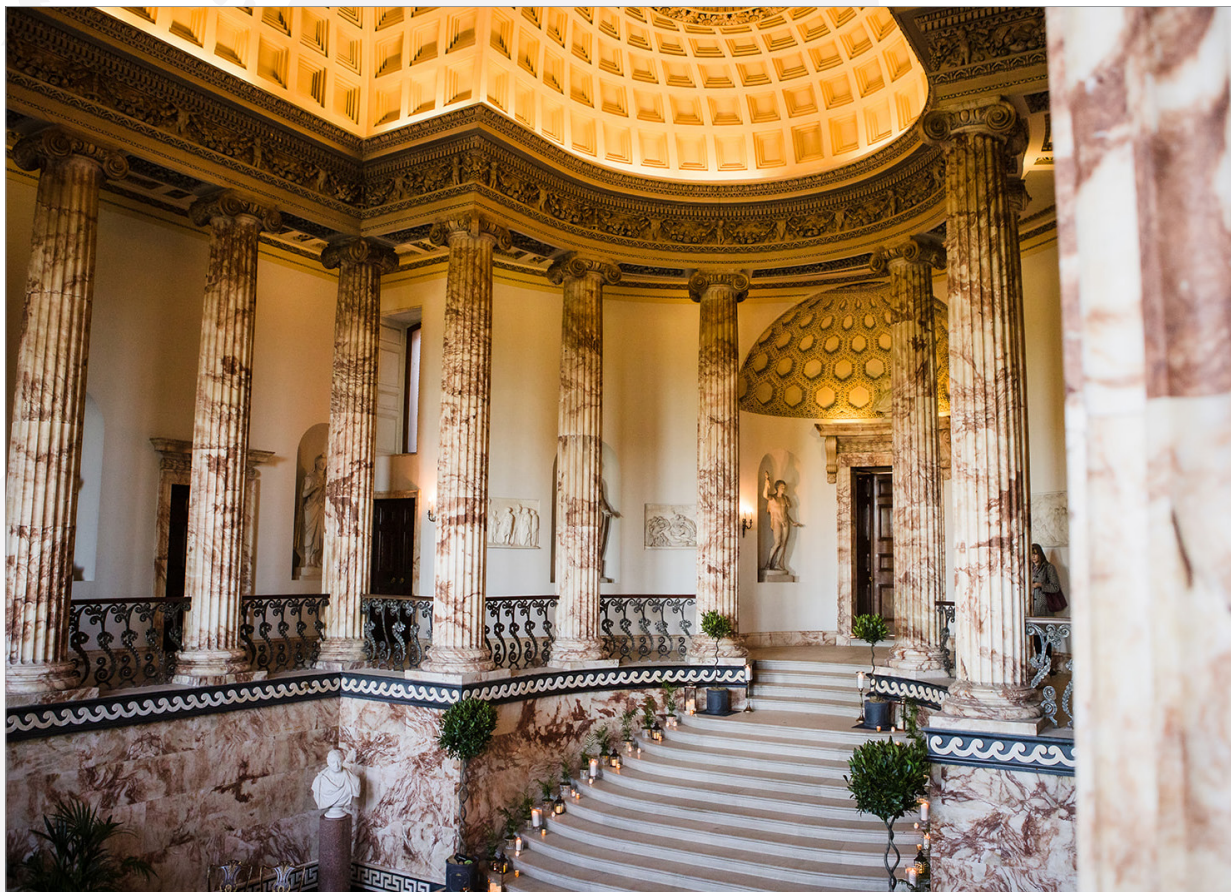
Finishes:

Polished, Honed



Alabaster at Holkham Hall

The Marble Hall - Mainly constructed from Staffordshire Alabaster, which is softer and more translucent than marble, the stone was transported to Holkham by barge and ship. The colonnade was inspired by the Temple of Fortune Virilis and the breathtaking ceiling by the Pantheon, both in Rome.



The Chapel - During the summer months, church services take place in the church of St Withburga in Holkham Park; but as the church has no heating, the congregation moves to this chapel for the winter months, where a service is held every Sunday.

Alabaster at Home House

In 1773 James Wyatt, was commissioned by Elizabeth, Countess of Home, to build a sophisticated 'Pavilion' designed purely for enjoyment and entertainment at 20 Portman Square. In 1775, Wyatt was sacked from the project and his competitor Robert Adam was appointed to complete the interior of the house in the sumptuous Neo-Classical style. 20 Portman Square is acknowledged as Robert Adam's finest surviving London town house.



Left:
Lady Islington bathroom



Left detail:
Doorcase made of
Tutbury Alabaster

Alabaster



**Britannicus
Stone**

Sustainability:

We take our responsibility to be as environmentally sustainable as possible very seriously and even though Stone is already ahead of almost all building materials in its green credentials, this doesn't mean we shouldn't try to continue to innovate and drive the environmental costs of using stone ever downwards. Our message is clear: *British stone is environmentally the right choice and will continue to be so.*

The Stone Federation of Britain

As a responsible stone company, we have strengthened our relationship with the British Stone Federation and fully support the Stone Federation Sustainability Statement.



The Stone Federation is passionate about the natural stone industry playing its part in delivering a more carbon and environmentally responsible built environment and ensuring an ethical and responsible supply chain.

As part of this we have signed up to the revised version of the Sustainability Statement which all members are asked to sign up to. Stone Federation members are encouraged to:

Act - Be proactive in implementing sustainability, ethical sourcing, environmental and carbon reduction policies within their business.

Measure - Measure their carbon, environmental and supply chain impact including business operations, material extraction and production.

Disclose - Be transparent about their carbon, environmental and supply chain impact and the ways in which they are working to reduce this and ensure that the information is accessible to clients.

Target - Be specific in targeting areas where they can reduce the carbon and environmental impacts of their business. These target areas should be at least in line with the Government's own Net Zero Carbon targets for the construction industry (78% reduction in emissions by 2038, 100% reduction in emissions by 2050).

Adjust - Continue to measure and assess their progress against their carbon, environmental and supply chain goals and adjust practices where necessary.



Contact:

Chelsea Wharf, 15 Lots
Rd, London SW10 0QJ
020 7751 5962

Email:

enquiries@britannicus-stone.co.uk

www.britannicus-stone.co.uk